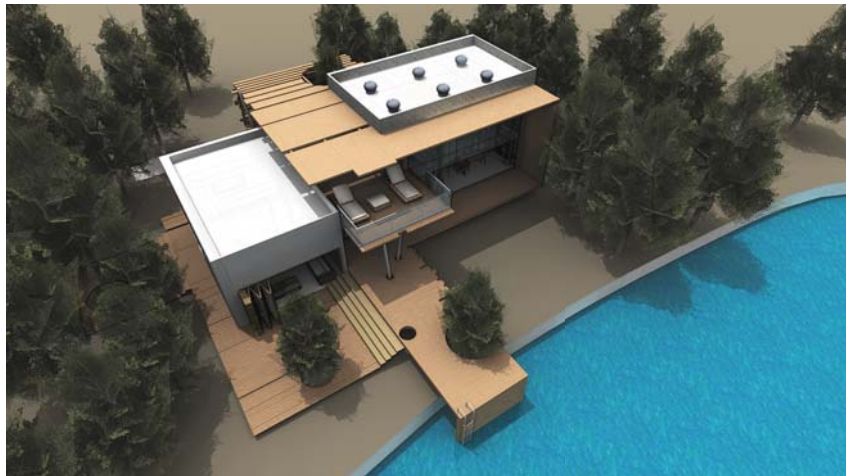


Who's Next 2.0 Competition

PROJECT DESCRIPTION

The Who's Next 2.0 competition sponsored by Freegreen.com is challenging designers to help define the design concept of Affordable Luxury. The days of free-flowing mortgages and multi-million dollar McMansions have passed. In this "new normal" home owners still desire livable, ascetically pleasing, and luxurious homes, but now need these same concepts implemented into smaller more affordable residential structures.

This single family home was designed as a lake front retreat with sustainable features and prefabricated elements to reduce construction cost.



PROJECT DATA

Building Area: 1,800 s.f.

Market: Residential

Services: Design, Renderings,
Programming

